



# Cordonel<sup>®</sup>

INNOVATIVE ULTRASONIC METERING WITH FLOW, TEMPERATURE  
AND PRESSURE MONITORING FOR A SMARTER NETWORK



Cordonel is a high-performance, versatile network sensor that enables you to manage your distribution network more efficiently. Providing proven in-field accuracy and reliable data whatever the installation and environmental conditions. Cordonel helps you build a smarter network for increased resilience and sustainability.

Take control with Cordonel®!

# Radical innovation combined with the benefits of ultrasonic technology lifts Cordonel® to the next level of performance thanks to:



**R1000 ratio** - ensuring Cordonel can be used across a wide range of utility applications as well as large commercial, industrial and agricultural applications. Its large range and consistency enable it to be utilised in virtually all C&I scenarios, simplifying inventory and asset management, and thereby reducing associated costs.



**12l/h starting flow detection** - the lowest starting flow rate of any static bulk meter (DN50) in the market, ensures even the smallest consumption is measured.



**Enhanced sensing capabilities** - integrated non-immersive water temperature measurement and integrated pressure sensing (optional) which helps utilities manage their water distribution networks more effectively.



Get **smart alarms** including empty pipe, high flow, reverse flow, low and high pressure and temperature, leak and tamper.



**U0D0 capability** which is well beyond the standardized test environments. The meter performs in the field as effectively as in the lab; it meets standard MID requirements in real-world applications, in all permitted installation scenarios and under the most challenging conditions.



Designed to deliver **20 year' operational service** - likely the longest battery life of any C&I meter in the market.



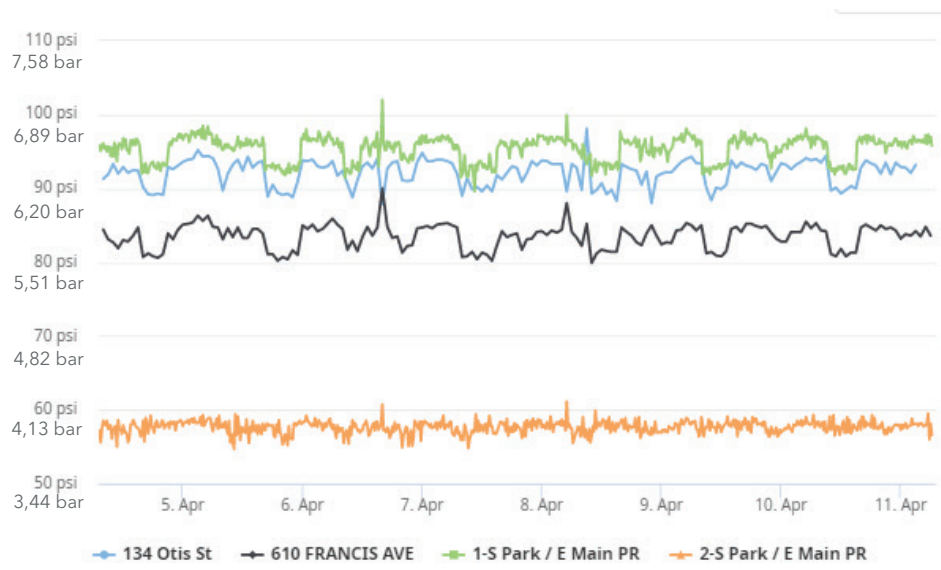
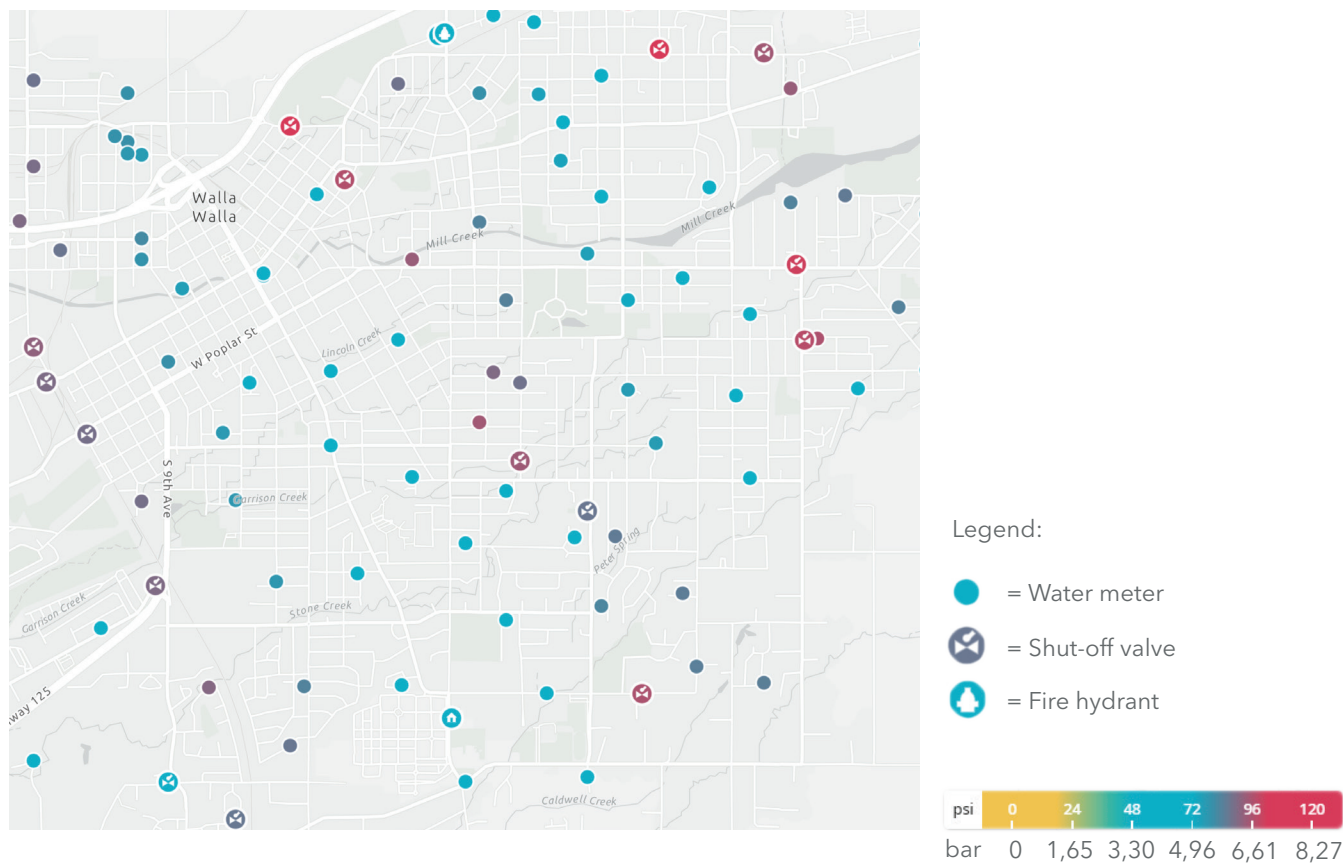
**Comprehensive range of communication options**, including integrated Wireless M-Bus, SensusRF, Near Field Communications (NFC), plug-in IR pulse monitoring (optional), and easy integration to external Sensus FlexNet AML gateways and NB-IoT modules.





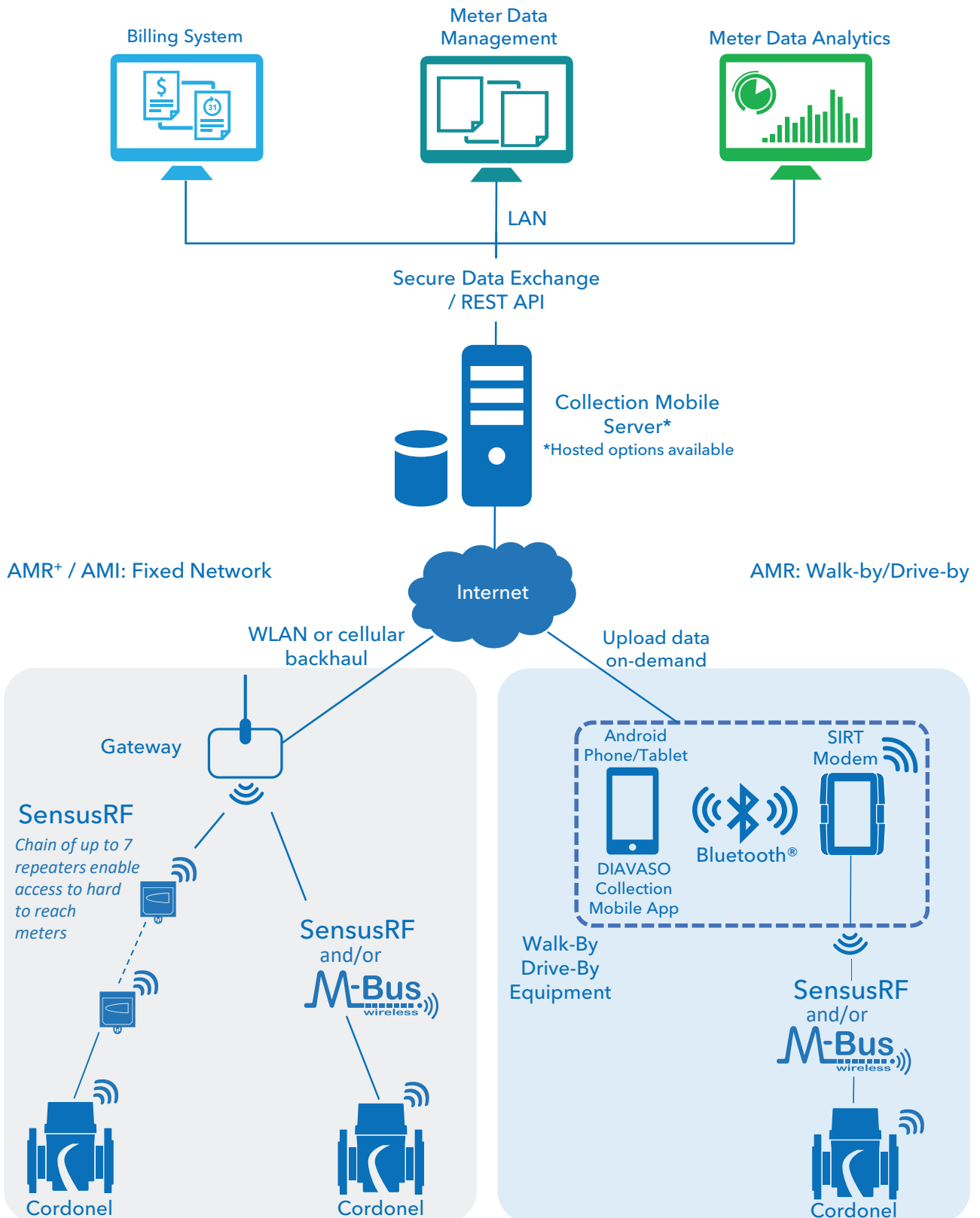
# Pressure makes the invisible visible

For a fraction of the cost of traditional monitoring systems, Cordonel's integrated pressure sensor provides crucial operational data of critical services across your water distribution network.



# Communication options for a smart water utility

No matter where you are on your digital journey, Cordone! securely supports walk-by/drive-by solutions (AMR) and interfaces with Sensus FlexNet, as well as multiple other AMI networks and various communication solutions, using the latest security standards.



# Customer benefits

Cordonel® can deliver the following benefits to customers across multiple applications:



The ability to be installed in tight or challenging installation locations (U0D0).



Cost savings through simplified asset management while maintaining accurate billing across a broad range of applications (R1000 + 12 l/h).



Pressure and temperature monitoring solution at a fraction of the cost and minimal installation effort.



High data reliability



Leak detection



# Xylem Solutions

At Xylem, the needs and demands of our customers play a pivotal role in the development of our products. When planning and constructing water supply networks, large buildings and houses there are many technical aspects to consider in terms of energy efficiency and sustainability. At Xylem, we have not only the engineering and technical

know-how but also offer a broad range of high- quality water and thermal energy meters, pump systems and water treatment units to support all your application needs, including heating and cooling solutions. For more information, contact your local Xylem sales or go to [xylem.com](http://xylem.com).



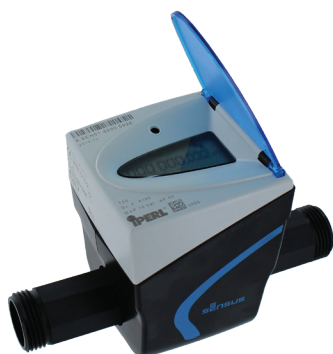
DIAVASO Mobile App Suite  
Remote meter reading



DomoJet®  
Domestic apartment  
water meter



LOWARA ecocirc  
BASIC Series  
Efficient circulator  
pump



iPERL®  
Residential, electro-magnetic  
water meter



Lowara GHV series  
Fully automatic booster  
sets for water supply and  
water pressure



PolluStat®  
Ultrasonic thermal  
energy meter

## Working together for a zero-carbon future.

Our solutions leverage on high efficiency technologies to reduce emissions  
across clean water and wastewater activities.





# Xylem |'zīləm|

- 1) The tissue in plants that brings water upward from the roots;
- 2) a leading global water technology company.

We're a global team unified in a common purpose: creating advanced technology solutions to the world's water challenges. Developing new technologies that will improve the way water is used, conserved, and re-used in the future is central to our work. Our products and services move, treat, analyse, monitor and return water to the environment, in public utility, industrial, residential and commercial building services settings. Xylem also provides a leading portfolio of smart metering, network technologies and advanced analytics solutions for water, electric and gas utilities. In more than 150 countries, we have strong, long-standing relationships with customers who know us for our powerful combination of leading product brands and applications expertise with a strong focus on developing comprehensive, sustainable solutions.

**For more information on how Xylem can help you, go to [www.xylem.com](http://www.xylem.com)**



Sensus GmbH Hannover  
Meineckestraße 10  
30880 Laatzen  
Germany  
+49 5102 740  
[sensus.com](http://sensus.com)



Xylem Europe GmbH  
Bleicheplatz 6  
Schaffhausen 8200  
Switzerland  
+41 5264 452 00  
[xylem.com](http://xylem.com)

More information:



[sensus.com/emea/products/introducing-cordone/](http://sensus.com/emea/products/introducing-cordone/)